

HIGHLIGHTS

Water sewer, and storm drain master plans.

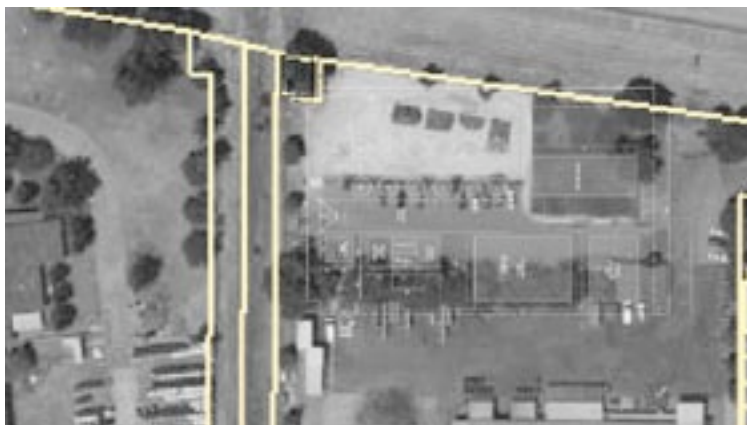
Hydraulic modeling.

Conceptual design and site plan for perchlorate treatment at four well sites.

Due to progressive growth, the City of Gilroy hired Carollo to prepare water, sewer, and storm drain master plans. Gilroy will use the new documents as a principal guidance tool for expanding municipal facilities and enhancing operation of existing systems. In addition to recommending infrastructure improvements to mitigate existing deficiencies, these master plans will include improvements for servicing anticipated short-term and long-term growth within the urban service area, and maintaining consistency with Gilroy's General Plan.

Carollo developed state-of-the-art hydraulic models for use as the central tool to evaluate existing water, sewer, and storm drain systems. These models are currently assisting in the development of recommendations for enhancing system operations, and for identifying improvements to serve anticipated growth.

As part of this comprehensive master plan, Carollo provided a conceptual design and site plan for perchlorate treatment at four well sites. The site layouts were prepared for both single use ion exchange systems and fixed-bed biological systems to allow the City to acquire necessary lands to build treatment facilities. Carollo also provided detailed cost estimates for both single use ion exchange and biological systems.



As part of a comprehensive master plan, Carollo provided a conceptual design and site plan for perchlorate treatment at four well sites.